



9250 Bendix Road North
 Columbia, MD 21045
 email: info@ilexeng.com
 tel: 410.715.1117

Tempest™

DCS Toolkit

Product Specifications

May 10, 2005

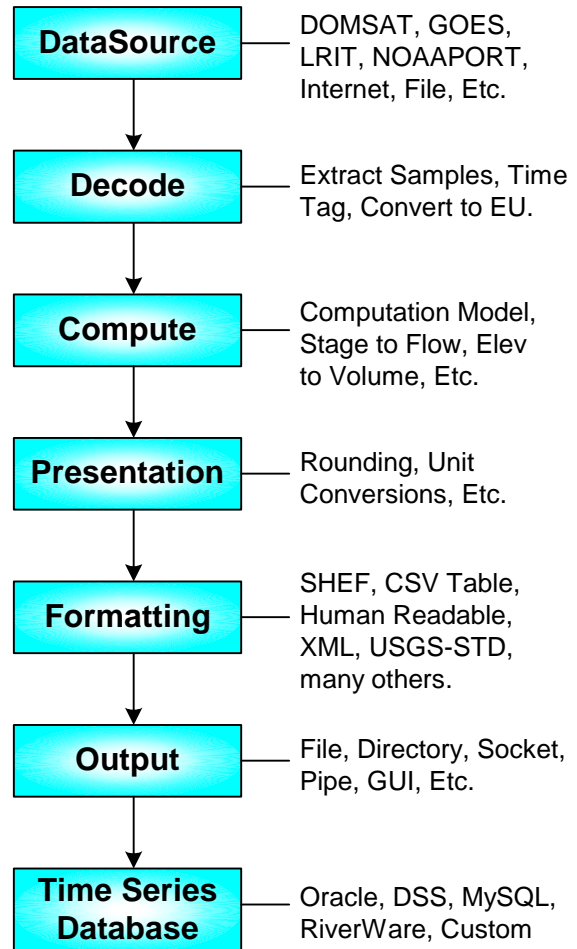
The DCS Toolkit is a suite of software that allows you to retrieve and process GOES DCS (Data Collection System) data. The Toolkit receives data from any of our *Tempest* LRGS Receivers (DOMSAT, GOES-DRGS, LRIT, NOAAPORT, Internet). It can work in real-time or in periodic batches on a schedule you set.

The figure at the right shows a typical application of the toolkit. The toolkit is implemented as a set of pluggable modules for maximum flexibility. It is designed to conform to the way *you* work rather than the other way around.

The Toolkit is implemented in 100% pure Java, so it will run on any modern computing platform (Solaris, Linux, Windows, AIX.) It can pull data from your own satellite receiver, or from the public servers operated by NOAA in Wallops, VA.

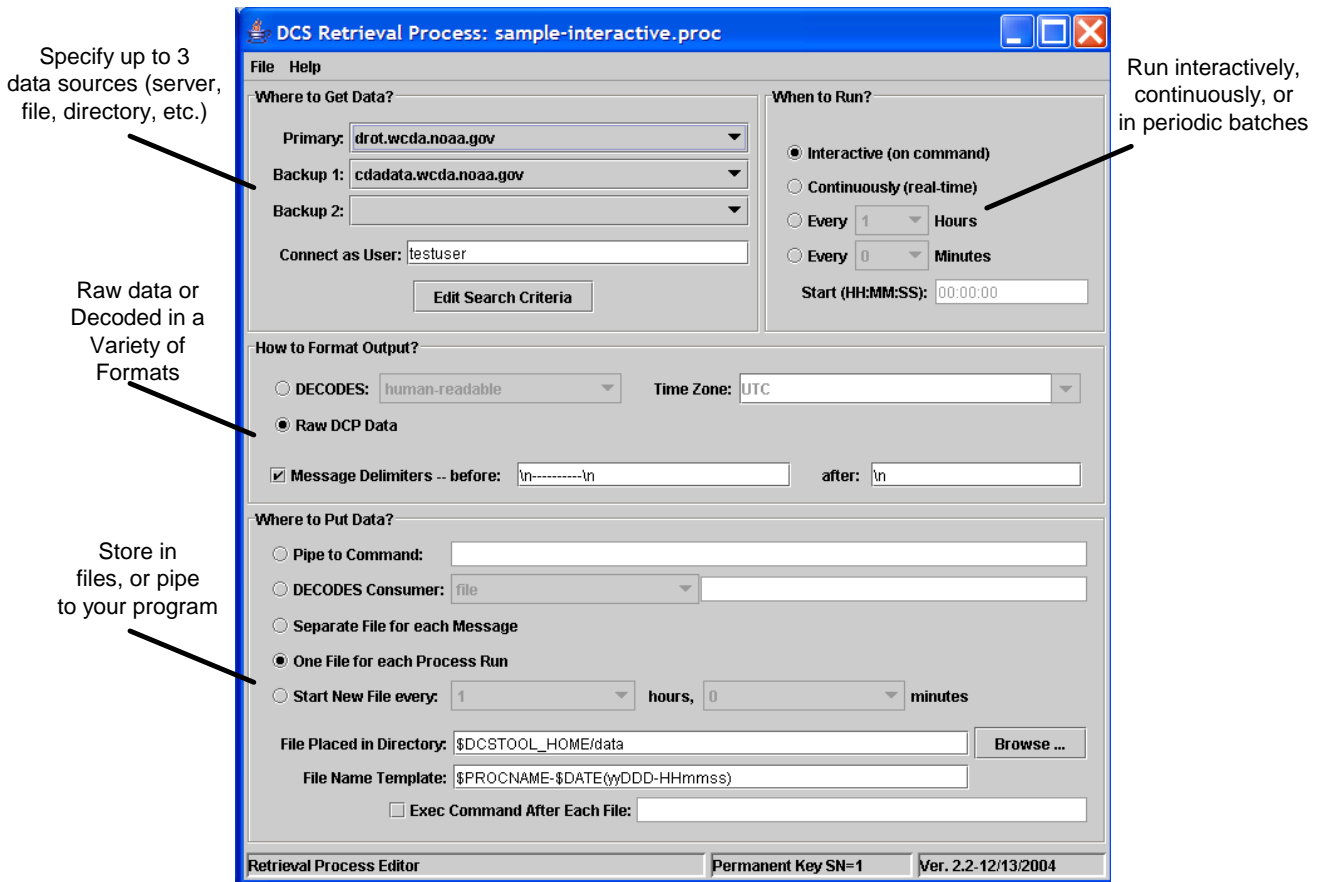
The toolkit can save raw or decoded data into local files on your machine, or you can pipe the data into your own programs in real-time. You can run the toolkit interactively, or in the background using the built-in scheduler module.

See our separate specification sheets on the LRGS and the Tempest DCS Analysis Module.

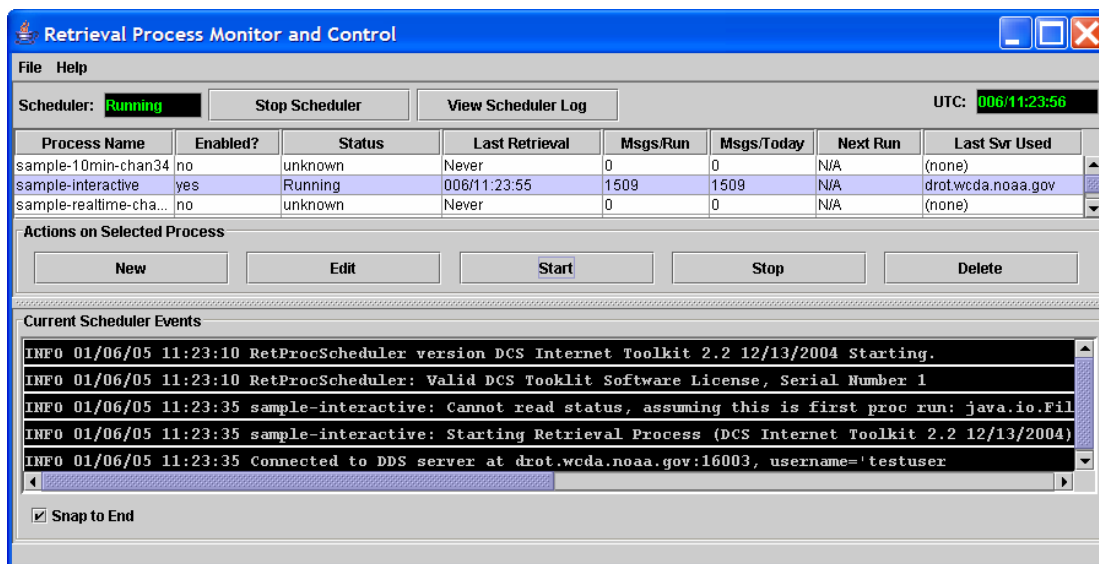


DCS Toolkit Features

- | | |
|--|---|
| <ul style="list-style-type: none"> • Retrieve DCP data from wide variety of sources. • Run in real-time, interactively, or in periodic batches. • Easy-to-use scheduler will automatically run your retrieval processes at set times of the day. • Receive data from a list of servers, automatically switching to a backup server in case of failures. • Select DCP messages by combination of time range, network list, DCP name, DCP address, GOES channel, or data source. • Command-line interface to run toolkit components from within your own scripts. • GUI to monitor real-time status of LRGS servers, and to select most reliable data source. | <ul style="list-style-type: none"> • Data can be retrieved in real-time from any Tempest Receive system (DOMSAT, LRIT, GOES, Internet) or from pre-stored files. • Supports a variety of output formats including SHEF, Human-Readable, EMIT-ASCII, XML, STDFMT, Transmit-Monitor, and CSV table. • Network browser for interactively retrieving and decoding DCP message data. • Converts data into standard engineering units. Standard English-Metric conversions built-in. • Uses a database of DCP specifications stored either in a SQL database or XML files. • Software designed to be easily expandable by adding custom classes, algorithms, etc. • Direct Support for USGS 'RDB' Rating Tables. |
|--|---|



Retrieval Process Editor. Easily build a schedule of retrieval processes that pull data from multiple servers, feeding it to your own programs and databases.



Process Monitor & Control. View real-time status of each process. Buttons for process control.